

# CORONAVIRUS

## COVID-19

COVID-19 (Coronavirus) is a new virus strain that originated in China and has spread to numerous countries including the United States. The vast majority of Coronavirus illnesses are mild with fever and cough and do not require hospital care. Elderly people and people with underlying medical conditions are at the highest risk. It is important that everyone recognize the symptoms and take these steps to reduce the spread of flu and the common cold, which will also help prevent Coronavirus.

## SYMPTOMS



FEVER



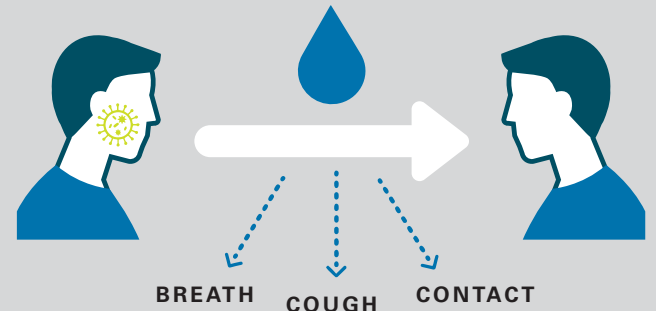
COUGH



SHORTNESS  
OF BREATH

Symptoms may appear 2-14 days after exposure.

## HOW IT SPREADS



*\*Droplets can land in the mouths or noses of people who are nearby or possibly be inhaled into the lungs.*



## CALL YOUR DOCTOR IF YOU...

- DEVELOP SYMPTOMS
- HAVE BEEN IN CLOSE CONTACT WITH A PERSON KNOWN TO HAVE COVID-19
- RECENTLY TRAVELED FROM AREA WITH WIDESPREAD OR ONGOING SPREAD OF COVID-19

## PREVENTION



WASH HANDS  
FREQUENTLY WITH SOAP  
& WATER OR SANITIZER



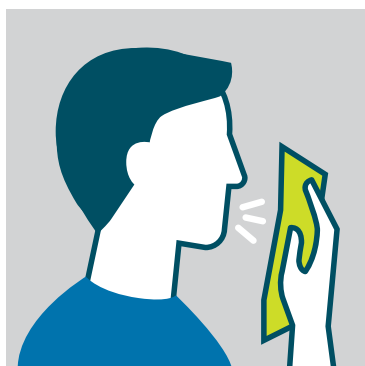
KEEP WORK AREAS  
CLEAN & DISINFECTED



MAINTAIN SOCIAL  
DISTANCING (AT  
LEAST 6 FEET)



AVOID TOUCHING EYES,  
NOSE & MOUTH WITH  
UNWASHED HANDS



COVER YOUR MOUTH  
AND NOSE WITH A  
TISSUE OR ELBOW



DISPOSE OF USED  
TISSUE IMMEDIATELY  
AND WASH HANDS



AVOID TRAVELING  
TO AFFECTED AREAS  
UNLESS NECESSARY



STAY HOME WHEN  
SICK, EXCEPT TO GET  
MEDICAL CARE

**Best sources for accurate information:** World Health Organization website ([www.who.int](http://www.who.int)) and Centers for Disease Control and Prevention ([www.cdc.gov](http://www.cdc.gov)).

If you have questions or need to report a concern,  
email [health@csielectric.com](mailto:health@csielectric.com) or call 562-946-0700 / x111